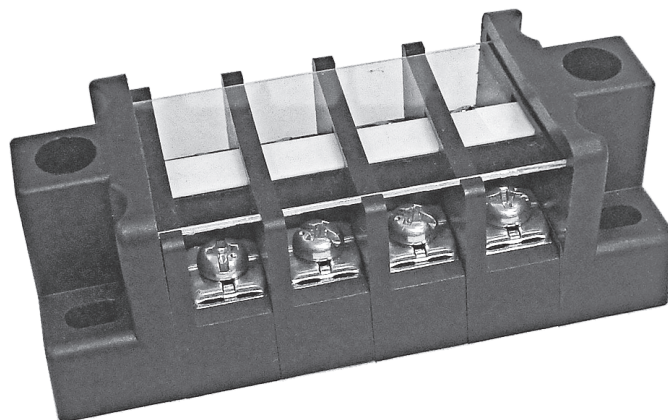




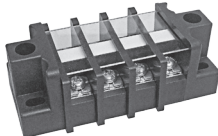
## TYPE: TFDM (貫通式端子台)

Pitch:12.70mm



## ORDER GUIDE(注文方法):

### TFDM-04

Body(本体)	Terminal style(端子スタイル)	Poles(極数)
TFD本體 (with mounts) 	M 	02 ⋮ ⋮ ⋮ ⋮ ⋮ ⋮ 16
TFD-A本體 (wide housing with mounts) 		

## SPECIFICATION(規格,仕様):

Terminal :	Brass, Ni plated, 1.0 t	端子金具 :	黄銅板 ニッケルメッキ, 1.0 t
Insulator body :	PBT(UL94V-0), Black	本体 :	PBT(UL94V-0), 黒色
Screw :	M4.0, steel, Zinc plated	端子ネジ :	M4.0, 鉄 亜鉛メッキ
Operation temperatures :	-40° C to +120° C	使用温度範囲 :	-40° C to +120° C
Rated current :	30Amp 600V	定格 :	30Amp 600V
Insulation withstands volt :	2000V 1min	耐電圧 :	2000V 一分間
Insulation resistance :	2000MΩ at DC 500V	絶縁抵抗 :	DC 500V 2000MΩ
Wire range :	10~20 AWG	適合電線 :	10~20 AWG
Screw torque :	18 lb-in	締付トルク :	18 lb-in
	Screw with washer		ワッシャー付ネジ

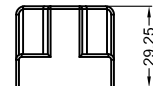
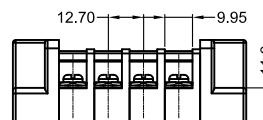
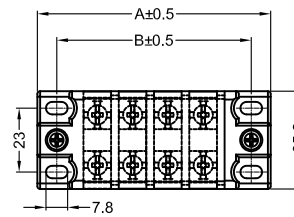
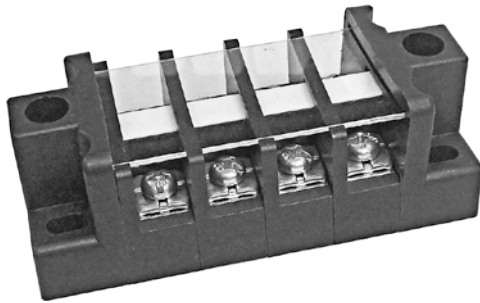
# .500" PCB Barrier Terminal Blocks

TYPE: TFDM

Pitch:12.70mm

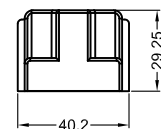
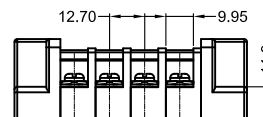
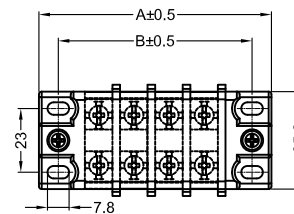
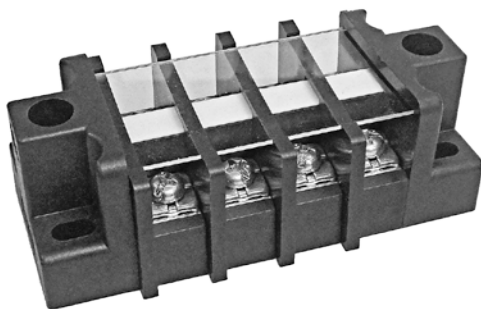
## TFDM-04

Terminal style:M



## TFDM-A04

Terminal style:M



Poles	2	3	4	5	6	7	8	9	10	11	12	13	14	15	16
A(mm)	58.60	71.30	84.00	96.70	109.40	122.10	134.80	147.50	160.20	172.90	185.60	198.30	211.00	223.70	236.40
B(mm)	44.60	57.30	70.00	82.70	95.40	108.10	120.80	133.50	146.20	158.90	171.60	184.30	197.00	209.70	222.40